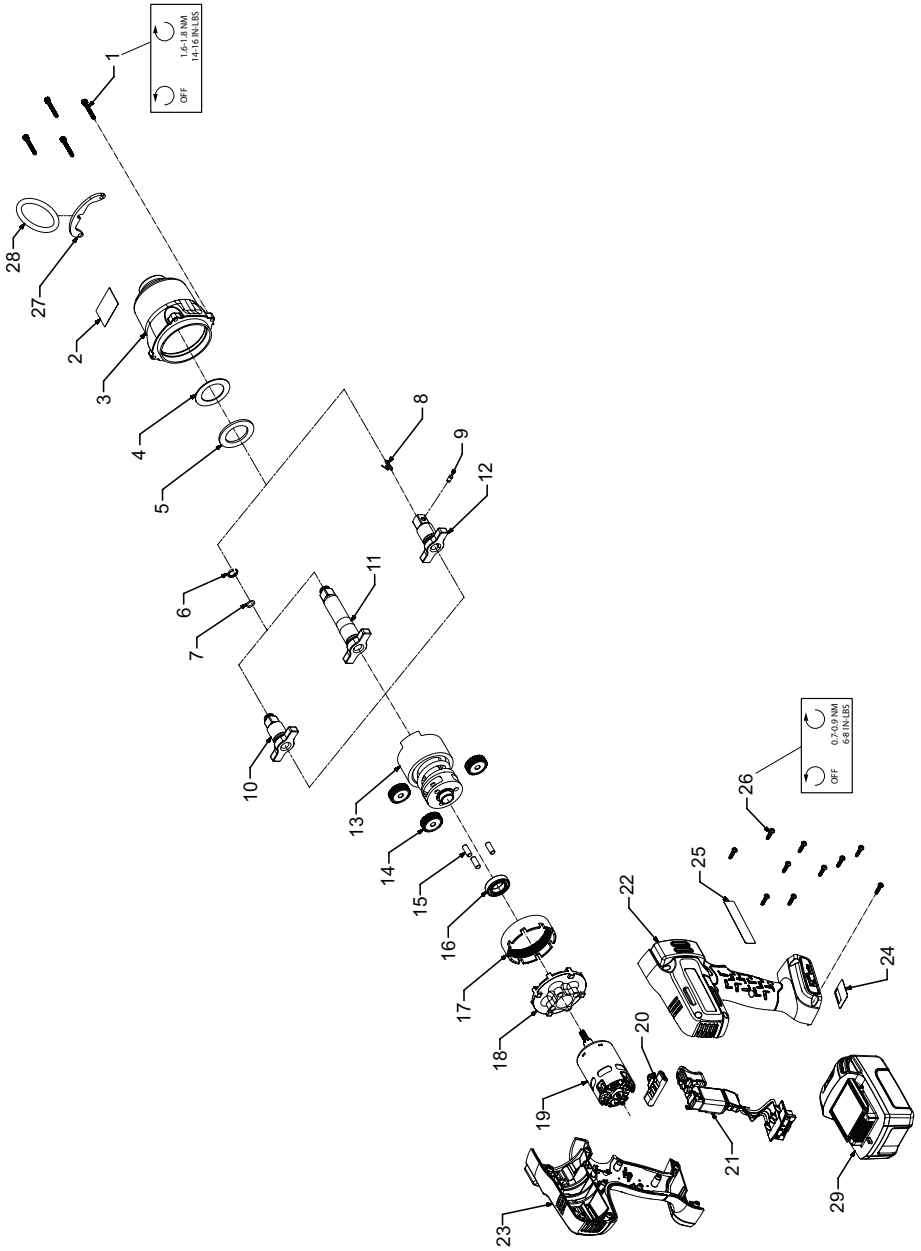


W7000 Series Cordless Impact Wrench - Exploded View



(Dwg. 48380281)



47122288  
Edition 9  
January 2015

## W7000 Series Cordless Impact Wrench - Parts List

Item	Part Description	Part Number	(CCN)	Item	Part Description	Part Number	(CCN)
*	Hammer Case Kit	W7150-K727	(48391494)		for W7150EU, W7150EU-P, W7250EU with Brake	W7150EU-K93	(48401814)
1	Screw, Hammer Case (4 Required)	--	--		for W7150EU, W7150EU-P, W7250EU without Brake	W7150EU-K93NB	(47517642001)
2	Warning Label	--	--	*	Housing Kit	W7150-K40	(48391320)
3	Hammer Case Assembly	--	--	22	Right Housing	--	--
4	Washer, Rubber	--	--	23	Left Housing	--	--
5	Washer, Steel	--	--	24	Serial Number Label	--	--
*	Socket Retainer Kit For W7150, W7150EU, W7250, W7250EU	2125QTI-K425	(80107733)	25	Information Label	--	--
6	Socket Retainer Ring	--	--	26	Screw, Housing (10 Required)	--	--
7	O-Ring	--	--	*	Fastener Kit	W7150-K105	(48391379)
*	Socket Retainer Kit For W7150P, W7150EU-P	2125PTI-K425	(80107725)	1	Screw, Hammer Case (4 Required)	--	--
8	Spring	--	--	26	Screw, Housing (10 Required)	--	--
9	Socket Retainer Pin	--	--	*	Label Kit	W7150-K99	(48391387)
*	Anvil Kit For W7150, W7150EU	W7150-K626	(48401756)	2	Warning Label	--	--
10	Anvil 1/2-in SQ Drive, Retaining Ring	--	--	24	Serial Number Label	--	--
6	Socket Retainer Ring	--	--	25	Information Label	--	--
7	O-Ring	--	--	*	Bracket Kit	W7150-K365	(47518084001)
*	Anvil Kit For W7250, W7250EU	W7250-K414	(48401764)	27	Bracket	--	--
11	Anvil 1/2-in SQ Drive, 2-in Extended	--	--	28	Ring	--	--
6	Socket Retainer Ring	--	--	*	Protective Tool Boot	W7150-BOOT	(48401855)
7	O-Ring	--	--		Grease		
*	Anvil Kit For W7150P, W7150EU-P	W7150P-K726	(47518085001)		IR #105 (1 lb can) for Impact Mechanism and Anvil	105 1 LB	(4279147)
12	Anvil 1/2-in SQ Drive, Retaining Pin	--	--		IR #105 (8 lb can) for Impact Mechanism and Anvil	105 8 LB	(04264875)
8	Spring	--	--		IR #67 (1 lb can) for Gearing	67 1 LB	(03773009)
9	Socket Retainer Pin	--	--		IR #67 (8 lb can) for Gearing	67 8 LB	(03820008)
13	Impact Mechanism Kit	W7150-K724	(48391536)		Grease Gun	R000A2-228	(03095015)
*	Planetary Gear Kit	W7150-K37	(48391429)	29	20V Li-Ion Battery Pack		
14	Planet Gear (3 Required)	--	--		3.0 Ah	BL2010	(48386791)
15	Pin (3 Required)	--	--		5.0 Ah	BL2022	(47515902001)
16	Bearing, Gear Carrier	--	--	*	Protective Battery Boot		
17	Ring Gear	--	--		For BL2010, BL2022	BL2010-BOOT	(47510964001)
18	Ring Gear Holder	--	--	*	Battery Charger	BC1121	(47507879001)
19	Electric Motor Kit	--	--	*	Carrying Case	W7000-CASE	(48380976)
	for W7150, W7150P, W7250	W7150-K54	(48401772)	*	Carrying Case Latch	W7000-LATCH	(47507275001)
	for W7150EU, W7150EU-P, W7250EU	W7150EU-K54	(48401780)				
20	Forward/Reverse Actuator	W7150-K75	(48391312)				
21	Trigger & Battery Connector Kit	--	--				
	for W7150, W7150P, W7250 with Brake	W7150-K93	(48401806)				
	for W7150, W7150P, W7250 without Brake	W7150-K93NB	(47517641001)				

\* Not illustrated

## Parts and Maintenance

When tool life has expired, it is recommended that the tool be disassembled, degreased and parts separated by material for proper recycling.

Tool repair and maintenance should only be carried out by an authorized Service Center.

Refer all communications to the nearest **Ingersoll Rand** office or distributor.

## Related Documentation

Manuals can be downloaded from [ingersollrandproducts.com](http://ingersollrandproducts.com).

For additional information, refer to:

Cordless Impact Wrench Product Safety Information Manual 04581146.

Cordless Impact Wrench Product Information Manual 47122262 (for models W7150/W7150P/W7250).

Cordless Impact Wrench Product Information Manual 48391130 (for models W7150EU/W7150EU-P/W7250EU).

